



Photos: Tomáš Novák

Case Study

Státní opera Praha

The State Opera of Prague was built in 1888, which makes it the newest of the three main opera houses in the Czech capital. Initially intended for the German speaking population, the Státní opera is popular among locals and international visitors alike.

Following a very ambitious three year reconstruction which was lead-managed by the international construction company Hochtief AG, the opera house reopened in January 2020. The project comprised not only the opera building itself but also the modernist National Assembly building next door, which serves as an operational space for both the State Opera and the National Museum.

A redesign of the stock market building, the National Assembly was built with both political and cultural uses in mind, however the Communist takeover put an end to the latter. This did not change until the return to democracy, when Radio Free Europe moved in and stayed for 14 years.



Project highlights

Name:	Státní opera Praha
Location:	National Assembly / State Opera of Prague
Project Type:	Rehearsal hall refurbishment
Building Type:	Cultural
Product Type:	Harlequin BLOC System



HARLEQUIN
www.harlequinfloors.com

Case Study

Státní opera

The requirement

A durable wooden theatre floor for two large rehearsal halls

The solution

A new concept in stage construction designed to enable contemporary performance spaces to easily accommodate multiple artistic disciplines.

Harlequin BLOC is a high-quality flexible modular stage floor system that allows custom sizing and shaping for all technical requirements.

The Harlequin BLOC Stage System is prefabricated using CAD and the latest CNC technology which enables highly accurate machining and the prefabrication of unique stage features such as curved edge revolves, lifts, dip traps and technical access points. The stage panels are installed directly to the primary or secondary stage structure (steel or timber) on top of an acoustic separation layer.

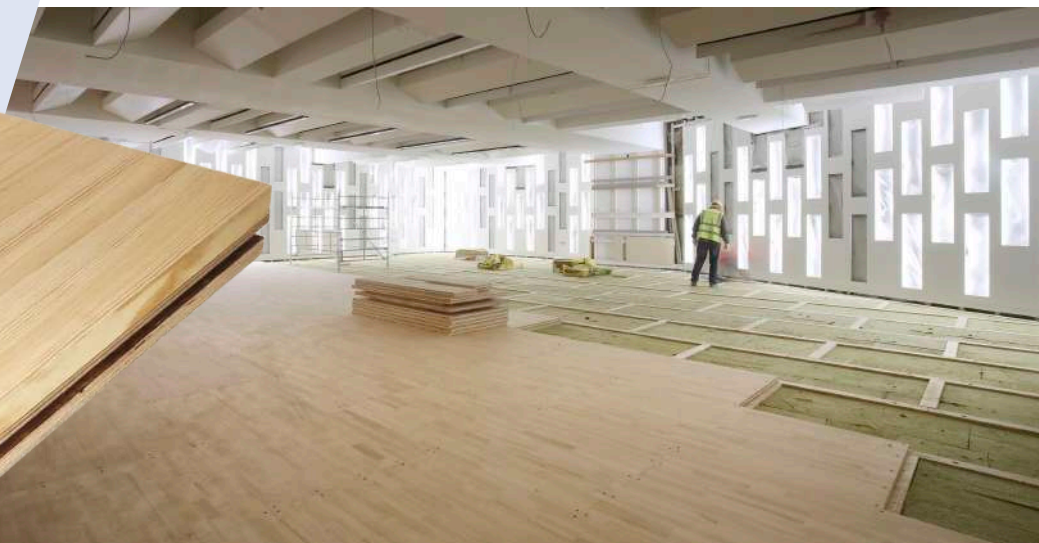
The Harlequin BLOC Stage System radically reduces on-site construction time compared with traditional stage construction methods.



Harlequin BLOC System

In the operational building, two large rooms were equipped as rehearsal spaces: A hall in the basement for theatre and a light, airy room on the first floor for the choir. Having a need for heavy equipment such as large podiums, Harlequin BLOC was the heavy duty solution to accommodate all uses.

Premium grade pine was surface bonded to a high strength birch ply sub-base to form the floor boards. They were manufactured off-site in 45mm thick 2m x 1m panels, allowing the rooms to be used for storage during the ongoing reconstruction works and allowing for precise time management.



If you would like further information, advice and samples please contact us on +61 (2) 9620 7770 or auscontact@harlequinfloors.com



HARLEQUIN
www.harlequinfloors.com