

HARLEQUIN
The world dances on Harlequin floors®



Harlequin **Liberty**™

Portable or permanent sprung floor



THE WORLD DANCES ON HARLEQUIN FLOORS®

Harlequin Liberty™

Portable or permanent sprung floor

Harlequin Liberty is a sprung floor panel system, designed for portable or permanent installation. It can be used on stage or for touring, or permanently installed in dance and rehearsal studios, schools and theatres.

Harlequin Liberty gives good area elasticity. The corners and sides of each large panel are fully supported by dual density elastomer pads, spaced at regular intervals. This gives uniform and consistent shock damping and provides the same “feel” and energy return to one or several dancers on the same panel, and with no hard spots at the joints.

Panels are laid in a brickwork fashion onto the sub-floor, so that cross joints do not coincide. The panels join together by a rounded tongue and groove, which is secured in place using our ‘one turn of the key’ latch and lock mechanism.







Harlequin's 'latch and lock' system

Selected Harlequin vinyl performance floor

Clear layered birch plywood with a rounded tongue and groove, plus a latch and lock system

Dual density shock dampening elastomer blocks at predetermined intervals

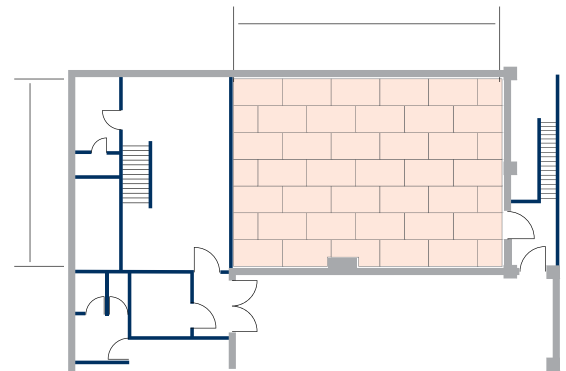
Harlequin LIBERTY™ - unique latching system

<p>The tongue and groove panels join together easily</p>	<p>The latching mechanism firmly joins the two panels together</p>	<p>Use the key to lock the panels in place. They can be released quickly and easily if required</p>	<p>Once all panels are locked together, your Harlequin Liberty floor is ready to lay the performance surface</p>
<p>①</p> 	<p>②</p> 	<p>③</p> 	<p>④</p> 

Construction

- Clear layered birch plywood with a rounded tongue and groove.
- Dual density shock dampening elastomer blocks are placed at predetermined intervals. The pads compress progressively under light and heavy loads, giving uniform and consistent shock damping and providing the same “feel” and energy return to one or several dancers on the same panel.
- Panels are laid brickwork fashion onto the sub-floor, so that cross-joints do not coincide.
- The pivot joint extends along the panel edges to within 20mm of the corners ensuring the corners are protected from flexion under load and the edges are also carefully supported by elastomer blocks.

Panels are laid ‘brickwork’ fashion



Accessories

Ramps are 59cm deep and come in various lengths



Edge trims are 6.5cm deep and are available in 2m and 1m lengths





Transport and storage for Harlequin LIBERTY™ sprung floor panels

Harlequin Panel Storage Carts are designed to protect the Liberty panels and provide an easy and safe way of moving them from place to place, or on and off vehicles when touring.

Sturdily made of black scratch-resistant powder-coated steel, each cart carries up to 20 full size panels. It is quick to load and unload and very easy to manoeuvre. In addition, the cart features forklift pockets for side lifting, if required.

If you would like further information, advice and/or samples then please contact us.

Tel: +61 (2) 9620 7770

Email: auscontact@harlequinfloors.com

Harlequin LIBERTY™ Panel Storage Cart





Specification guide

Permanent or portable	Both
Floor panel size	1m x 1m & 2m x 1m
Minimum floor thickness (before inclusion of chosen finish)	37mm
Minimum floor weight (before inclusion of chosen finish)	12.5kg/m ²
Testing standards	DIN 18032-2
Average shock absorption	67%
Maximum point load (BS EN 1195)	1126kg

If you would like further information, advice and/or samples then please contact us.

Tel: +61 (2) 9620 7770

Email: auscontact@harlequinfloors.com



All Harlequin floors are unconditionally guaranteed against defects in manufacture, provided that claims are made within six months of date of delivery or installation by us.

Harlequin's liability extends only to the replacement of a defective product. The company shall not be liable in any way for accidental loss or damage in connection with an improper use or consequential loss or damage.

Harlequin sprung and vinyl floors are guaranteed for reasonable wear and tear for five years from the date of delivery or installation.

Harlequin Showfloor™ and Harlequin Hi-Shine™ have a limited warranty for 24 months from the date of delivery.

HARLEQUIN

The world dances on Harlequin floors®



Australian Harlequin Pty Ltd
Unit 1, 47 Prime Drive
Seven Hills, NSW 2147
Australia

Tel: +61 (2) 9620 7770
Fax: +61 (2) 9620 7771

www.harlequinfloors.com
auscontact@harlequinfloors.com

SYDNEY
LONDON
LUXEMBOURG
BERLIN
PARIS
MADRID
LOS ANGELES
PHILADELPHIA
FORT WORTH
HONG KONG
TOKYO

